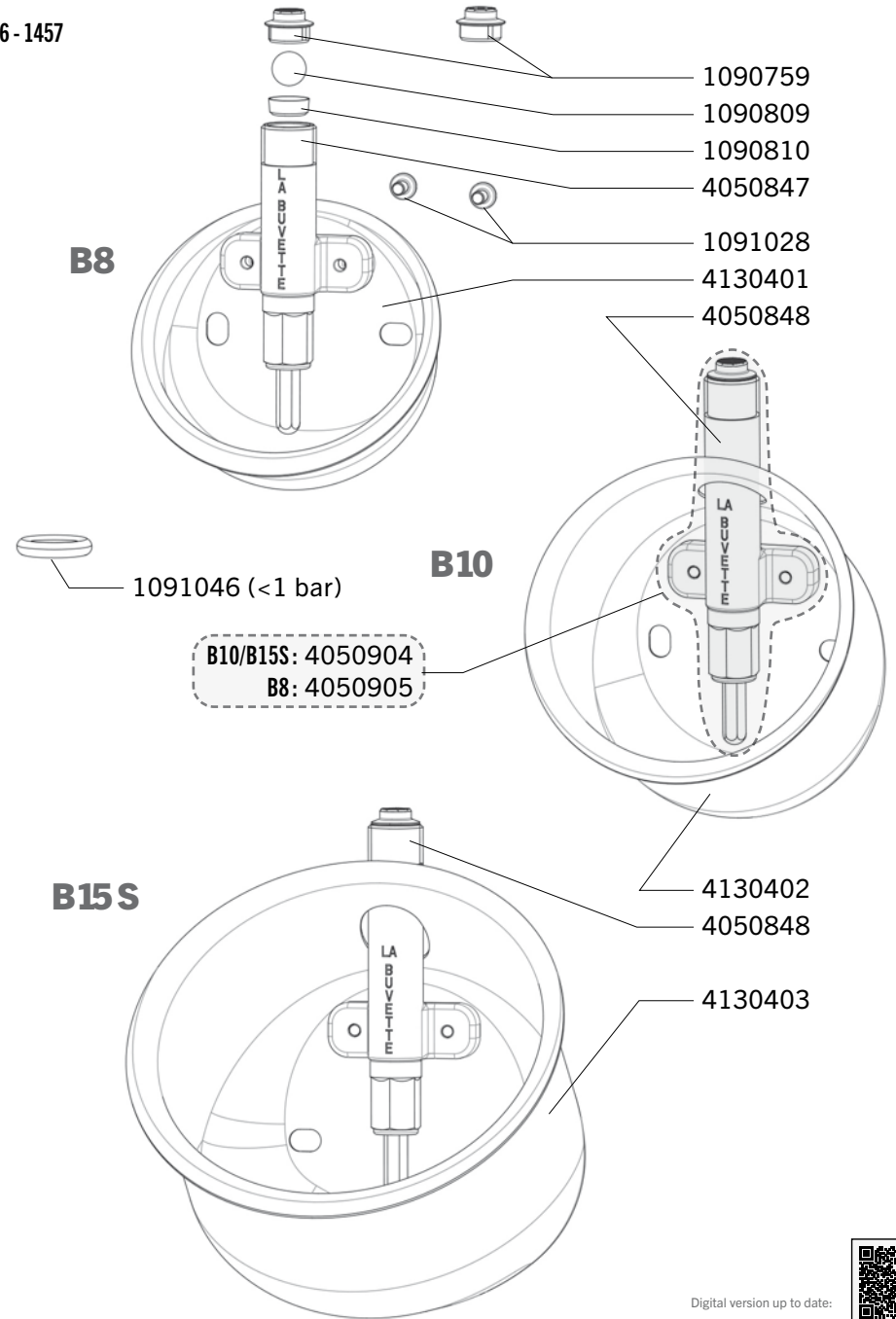
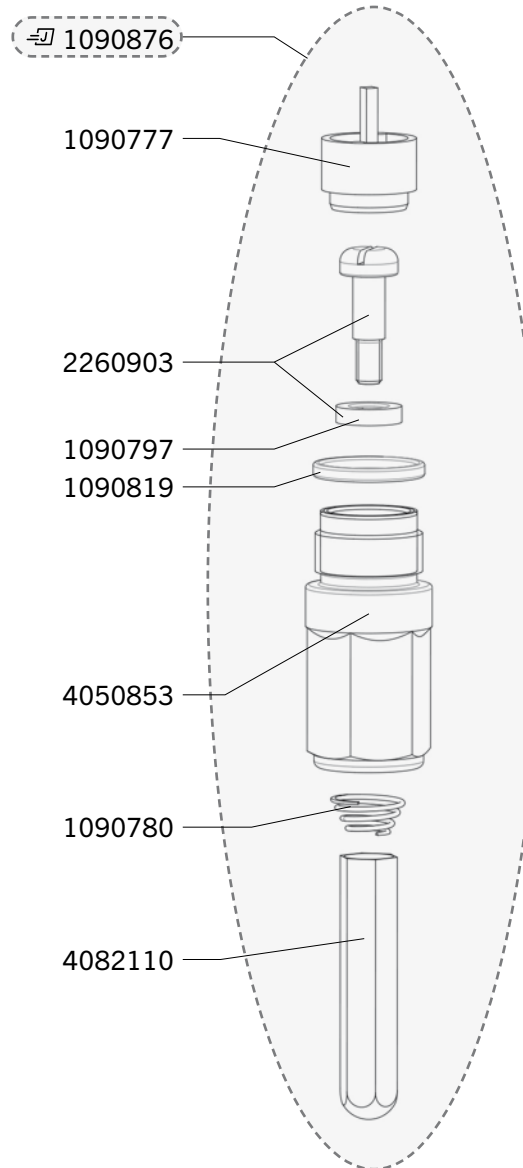


B8 - B10 - B15S

Ref. 1451 - 1452 - 1453 - 1454 - 1456 - 1457

Ship.	Code	Designation
J+5	1090759	2 X 10 PLASTIC FILTER FOR B8/B10/B15/B19
J+5	1090777	5 X COMPLETE PRESSURE ADJUSTMENT
J+1	1090780	10 X STAINLESSSTEEL SPRING
J+1	1090797	BAG 10 RUBBERS B8/B10/B15S/BALPI/BALP
J+5	1090809	10 X PLASTIC BALL
J+5	1090810	BAG OF 10 WATER SHUT-OFF SEATS B8/10/15
J+5	1090819	SET OF 10 O-RINGS B10
	1090876	VALVE UNDERPART BALP BLISTER PACK
J+5	1091028	BAG WITH 10 STAINLESS STEEL SCREWS.
J+5	1091046	BAG WITH 10 JOINTS/BALPI-LOW PRESSURE
J+5	2260903	SCREW + SEAL
J+5	4050847	STAINLESS STEEL CONNECTION B8
J+5	4050848	CONNECTION BODY B10/B15S
J+5	4050853	SS.BODY
J+5	4050904	COMPLETE VALVE B10
J+5	4050905	COMPLETE VALVE B8
J+5	4082110	ACTIVATOR PIN B8/B10/B15S/BALPI/BALP
J+5	4130401	STAINLESS STEEL BOWL B8
J+5	4130402	STAINLESS STEEL BOWL B10
J+5	4130403	STAINLESS STEEL BOWL B15
Former versions: BALPI, BALP, B8, B10 before 09/2000		
J+5	1090775	10 X FREE RUBBER



Shipping time in working days (running out of stock excepted), spare parts tagged with a (J) are dispatched the same day if order received before noon and made of parts tagged with (J) exclusively.

Digital version up to date:

